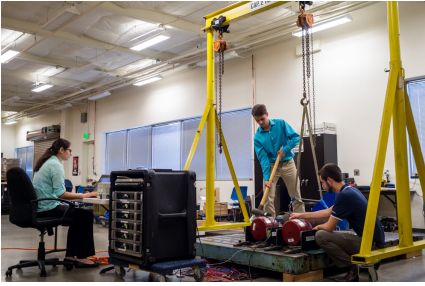
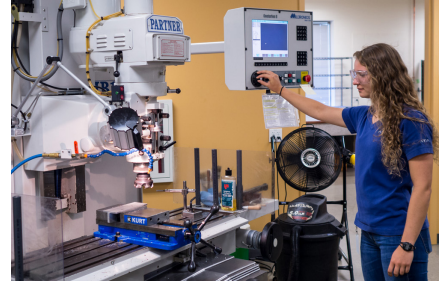
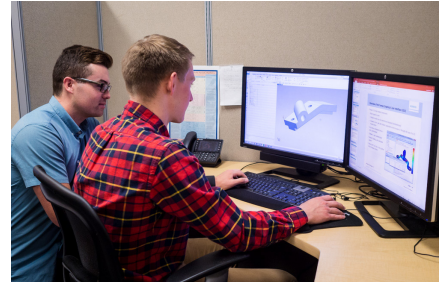


# Co-Op and Intern Employment



*"I started with this company 30 years ago as a co-op, and by the time I was finished I was extremely confident about what I wanted for my career. I wouldn't change a thing about my decision."*

- Tom Deiters, VP & General Manager, and former co-op



*ATA's co-ops and interns work on everything from roller coasters to Mars rovers, often in the same day!*

ATA Engineering, Inc., (ATA) provides test- and analysis-driven design for aerospace, defense, themed entertainment, robotics and controls, consumer products, and industrial and mining equipment. We use advanced computer-aided engineering software to solve problems for our customers and to design, analyze, and test complex, highly engineered structures subject to severe dynamic loads. We provide engineering services in a number of disciplines, including structural design, static/dynamic structural analysis, composites, thermal analysis, modal and vibration testing, fatigue/fracture, computational fluid dynamics, and vibroacoustics.

To learn more about ATA, please visit our website at [www.ata-e.com](http://www.ata-e.com).

ATA's co-ops/interns perform the same type of work on the same projects as our full-time engineering staff. In addition to gaining valuable real-world work experience, a co-op/intern position at ATA can lead to a full-time position after graduation. We use our co-op/intern program to identify, train, and recruit highly motivated students into future full-time employees. In fact, approximately 30% of ATA's full-time engineering staff got their start as ATA co-ops/interns. You can learn more about ATA's co-op/intern program by visiting [www.ata-e.com/careers/co-op-internship-programs/](http://www.ata-e.com/careers/co-op-internship-programs/) or by sending an inquiry email to [interns@ata-e.com](mailto:interns@ata-e.com).

*"The co-op program allowed me to gain industry experience before graduating, making school more relevant; at the same time, I was able to evaluate the company I ended up being employed with for the next few decades."*

-Dan Hensley, Rocky Mountain Operations Director and former co-op

*"ATA's internship program allowed me to apply classroom knowledge to real-world applications, and the variety of work ensured that I was learning new skills."*

-Daniel Kaminski, Engineer and former intern



# Co-Op and Intern Employment

## ATA Engineering: A Diverse and Rewarding Experience

From satellites and launch vehicles to entertainment rides, air frames, and electronics, the work at ATA is exceptionally diverse. If you are interested in working on a wide variety of complex engineering problems, ATA is the place for you.

A co-op/intern position at ATA will likely be your first opportunity to take what you've learned in the classroom and apply it to a real engineering problem. The hands-on experience you get at ATA will be invaluable in guiding not only your career path but also your academic plans.

## ATA Engineering Co-op/Intern Job Descriptions

**Major:** Engineering (Mechanical Engineering, Aerospace Engineering, Structural Engineering, Engineering Mechanics, or equivalent)

**Locations:** San Diego, CA; Albuquerque, NM; Berkeley, CA; Boston, MA; Denver, CO; Huntsville, AL; Los Angeles, CA; Madison, WI; Washington DC

As an ATA co-op/intern, you will have the opportunity to:

- Use industry-leading software packages to build and modify 3D CAD models and finite element analysis models
- Develop your engineering skills by performing pre-analysis model checks, running finite element analyses, and postprocessing results
- Write programs to perform complex or repetitive tasks
- Travel to customer sites and install accelerometers or strain gauges in preparation for structural testing
- Help develop customer presentation and engineering reports, and participate in customer meetings
- Start by working side by side with full-time engineers as you gain the experience to work more independently and with less supervision
- Grow as an engineer to be able to make modeling and analysis decisions on your own

## ATA Assistance/Compensation

- Transportation reimbursement to ATA office location and back to your university
- Reimbursement for up to \$600 of your university's fees for participation in the Cooperative Student Program
- ATA apartment housing provided at reasonable payroll deduction
- Paid company holidays that occur during your co-op/intern sessions
- Sick pay
- Seniority: Students who become regular full-time employees of ATA will receive credit toward their seniority-based company benefits (currently, educational assistance program and vacation time) for time actually worked as a co-op/intern education student

*Many of our contracts require access to government, defense, and classified information. We cannot consider your application unless you are a US Person as defined by 22 C.F.R. § 120.15.*

*ATA Engineering is an Equal Opportunity/Affirmative Action employer. It is ATA's policy to recruit, hire, train, and promote into all job levels employees and applicants for employment without regard to race, color, creed, sex, age, national origin or ancestry, physical or mental disability, veteran status, marital status, medical condition including genetic characteristics, gender identity, gender expression, sexual orientation, or any other category protected by federal, state, or local laws.*

*If you are a qualified individual with a disability or a disabled veteran, you have the right to request an accommodation if you are unable or limited in your ability to use or access our career center as a result of your disability. To request an accommodation, contact an ATA Engineering, Inc., Human Resources Representative at [careers@ata-e.com](mailto:careers@ata-e.com).*